

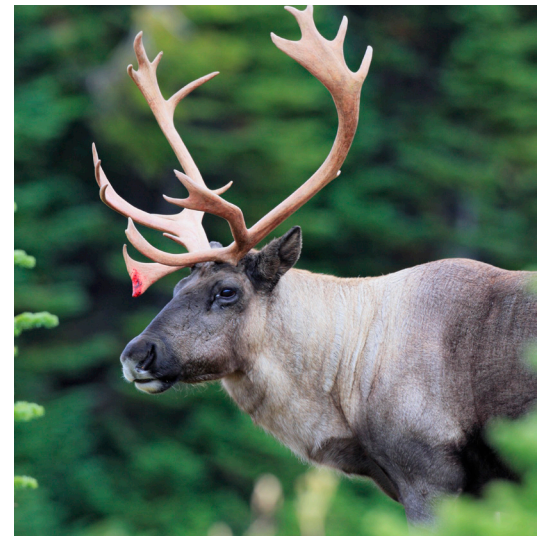
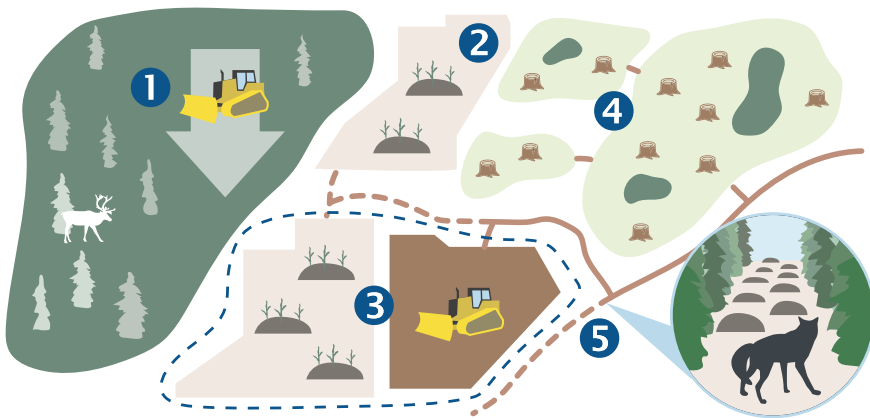
Range Plan for Woodland Caribou in SK2 East: Overview

Woodland caribou are an integral part of Saskatchewan's forests and a culturally significant species to Indigenous peoples. Woodland caribou rely on older conifer forests and peatlands and are impacted by disturbances including industrial activity, roads, forest harvest and wildfire.

A plan for reducing human impacts on caribou

This range plan outlines strategies for managing woodland caribou habitat while acknowledging Traditional land use and allowing continued economic activity.

We will do this using five main strategies:



- 1 Reducing new disturbance in important caribou habitat.
- 2 Reclaiming and restoring old disturbances to create habitat.
- 3 Mitigating new disturbances by restoring habitat next to them.
- 4 Harvesting forests strategically to create and maintain larger patches of old forest.
- 5 Managing access to reduce caribou exposure to people and predators.

It will be possible to achieve this range plan's goal while maintaining similar levels of land use activity. However, these strategies may require industrial, recreational and other users of Saskatchewan's northern forests to modify their practices and activities.

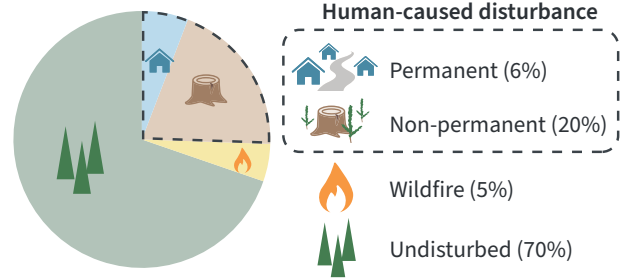


SK2 East: High-value habitat with relatively low disturbance

SK2 East provides the physical connection between caribou habitats in Saskatchewan and Manitoba. It has a large amount of high-value habitat and the lowest levels of human-caused disturbance and wildfire within SK2.

Caribou population numbers are not known in this area. Based on disturbance trends, local knowledge and recent monitoring efforts, we believe caribou have been declining.

Disturbance in SK2 East:



Target: Maintain at least 65% undisturbed habitat.

Caribou habitat management areas

Caribou habitat management areas identify zones ("tiers") with similar importance to caribou, potential risks and primary strategies for caribou conservation. These areas are not permanent: they will be updated as habitat conditions, land use and caribou populations change over time.

Tier 1: Conserve what's there

These areas have important caribou habitat (existing and potential) and low human disturbance.

Strategies:

- ▶ Limit new disturbances.
- ▶ Mitigate new disturbances.
- ▶ Reduce the number of roads and trails.

Tier 2: Create new habitat

These areas have moderate habitat potential for caribou and have higher levels of wildfire and human disturbance.

Strategies:

- ▶ Reclamation and restoration.
- ▶ Mitigate new disturbances.
- ▶ Reduce the number of roads and trails.

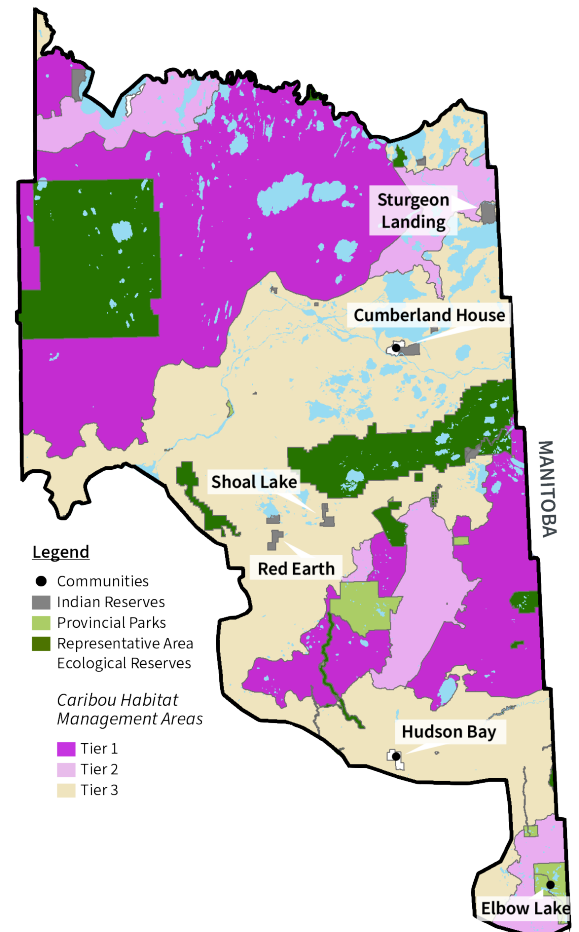
Tier 3: Connect the dots

These are areas that caribou must travel through as they move between Tier 1 and Tier 2.

Strategies:

- ▶ Maintain habitat connections (e.g. natural forest pattern harvesting).

Caribou habitat management does not restrict traditional use and access by Aboriginal and treaty Rightsholders. This includes hunting, trapping and harvest of caribou.



To learn more about caribou range planning in Saskatchewan, view the full range plan or report a caribou sighting, visit saskatchewan.ca/woodland-caribou.